

Vista Installation

Step 1:

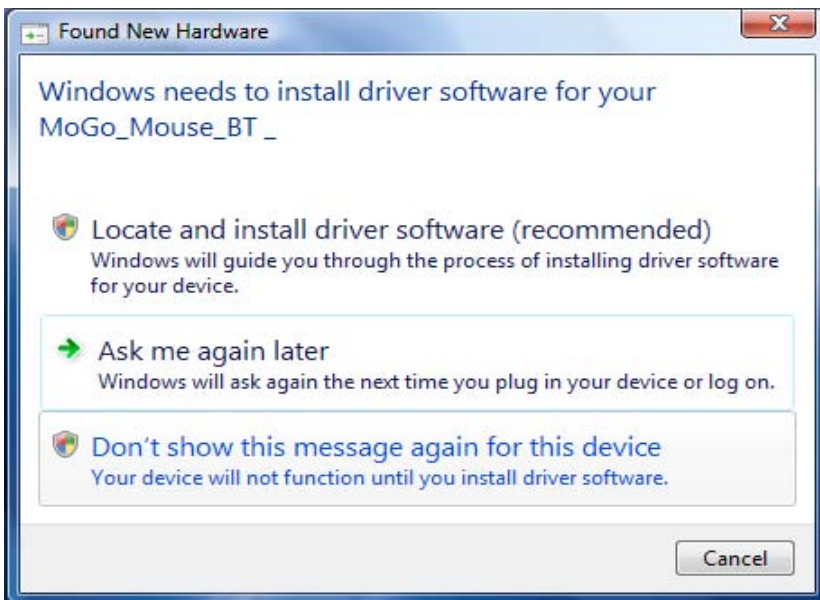
Before using the MoGo Mouse BT the mouse must receive a complete charge. The mouse is equipped with an internal battery and is inserted inside your PCMCIA (type II PC card) slot for charging. (The laptop must be turned on.)

Step 2:

The MoGo MouseBT automatically begins to charge when inserted into the PC card slot. A red light turns on to indicate that the mouse is charging.

Step 3:

When inserting the MoGo Mouse BT into your computer's PCMCIA slot for the first time, the window bellow will appear. Though no drivers or software is required for the MoGo Mouse to charge, Microsoft Windows Vista will try to load a driver for the MoGo Mouse. To stop Microsoft Windows Vista from displaying this window follow the teps below. Once completed no other action is required for setting up your laptop for charging.



Click on the option:
"Don't show this message
again for this device"

Although you may see a message warning you that the driver was not installed and your device may not work properly. You can ignore this as the MoGo mouse BT does not need a driver to operate properly.

Windows Vista may also ask your permission to continue this action. Make sure to select "Continue" if this window appears.

Step 4:

Please allow up to 60 minutes for initial charging of the MoGo Mouse. When the charge is complete the status indicator light will turn green.

Step 5:

Remove the MoGo Mouse from the laptop and proceed with Pairing procedures described in your MoGo Mouse BT Manual.

For complete instructions on pairing a Bluetooth Device in Windows Vista please visit the Microsoft website.

<http://windowshelp.microsoft.com/Windows/en-US/help/67cdb8d4-c3fe-43db-a00e-53159bf8695b1033.msp>

Interactive Video pairing instructions is also available and can be found on the web at



http://bluetooth.com/Bluetooth/Connect/Devices/MoGo_Mouse__Select_Your_Personal_Computer_Model.htm